

## **Technical requirements**

“Why don't you sleep at night?”

### **Stage**

Width: min 10 m (ideal 14 m)

Depth: min. 7 m (ideal 10 m)

Backdrop: black with central entry

Side: black curtains for all the length of the two sides of the stage & two entrances for each side

Floor: black linoleum

Audience area: the performer need to access the audience area from the stage

NB: from wall to backdrop & side curtains we need 30/40 cm for the passage of performers during the show

If there are other availabilities and space settings please contact us

### **Lighting system**

Dimmer with. 36 channels of 2000W

21 PC 1000W

14 PAR 64 CP 62

2 PAR CP 60

3 profile spot 26°

1 profile spot 25-50°

16 Wash or PAR LED

depending on the size of the stage and the height of the theatre, we can evaluate the request

1 smoke machine

2 floor light holder

-> Please advise which light desk is available in the theatre

### **Audio system**

Audio mixer with inputs for 1 computer (stereo line)

amplifiers and speakers suitable for the hall

Stereo Di box (2 trs input to 2 xor output)

2 xlr connection to the stage

## **Dressing rooms**

The company needs dressing rooms for 3 people, with tables, make-up mirrors, washbasin showers and WC.

An iron and ironing board and a coat rack are also needed

## **Set Up**

Starts the evening before the day of the performance, approximately 14H

PLANNING:

### Day before the performance

14H to apx 19H → light & audio set up, focus

### Day of performance

10 H → the company enters the theatre for spacing and rehearsals

→ the technician checks the lighting desk

Stage cleaned and free 2h before the show

Soundcheck before the start of the show

## **Personnel**

1 light technician and 1 audio technician for lighting and sound are needed for the set up

## **Contact**

“Why don’t you sleep at night?”

Verein Landholz Productions  
Unterer Heuberg 21a  
4051 Basel

### **Project Management and Artistic Direction**

Lia Schädler

0041 793171387

liaschaedler@gmx.ch

### **For technical questions**

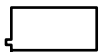
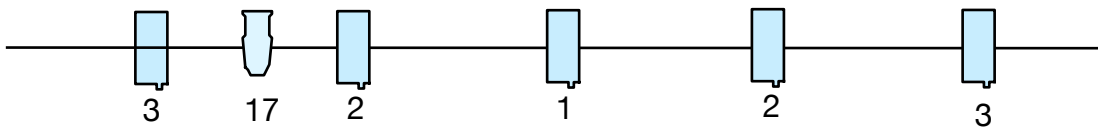
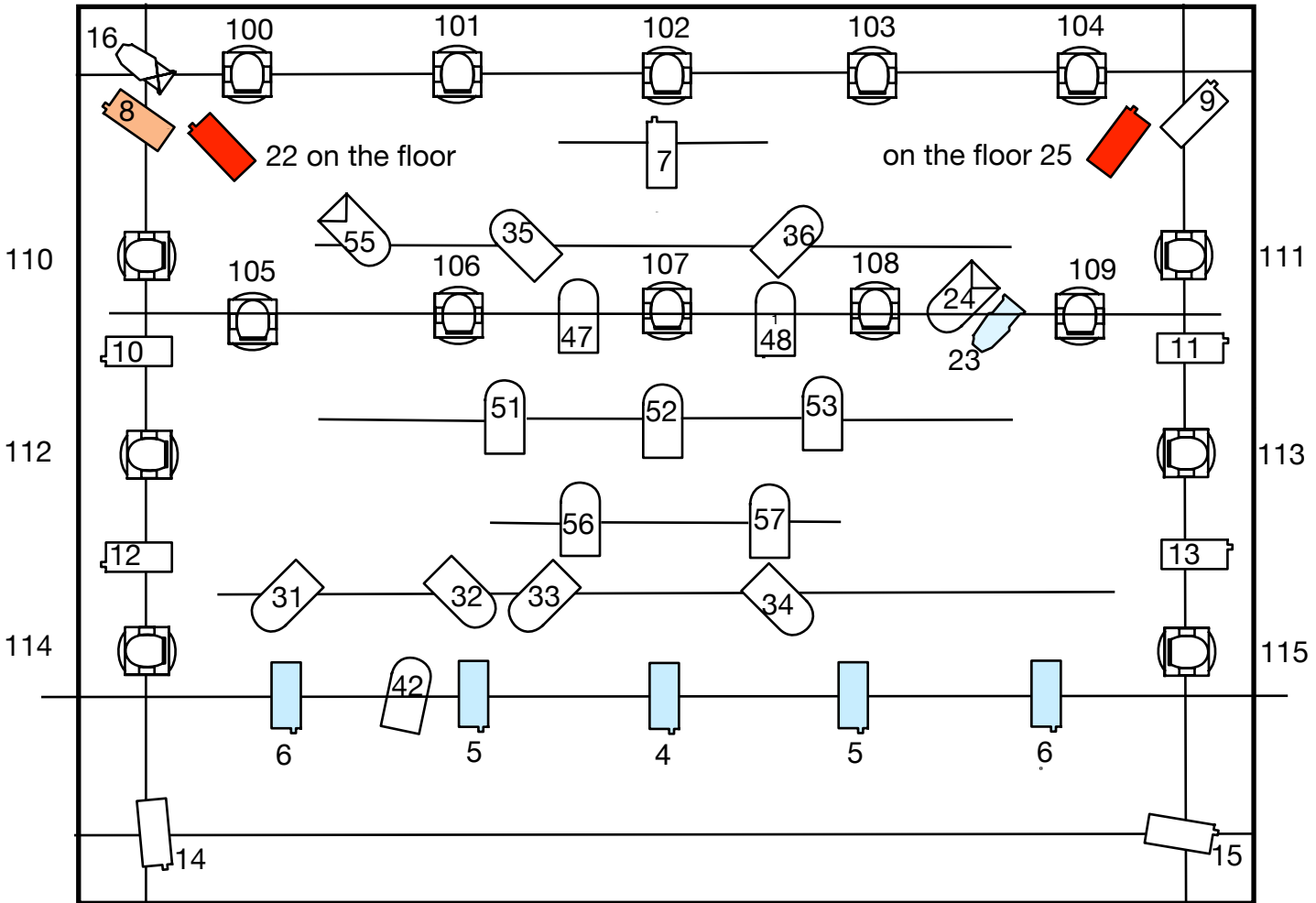
Eva Luna Thomann

0039 3404174003

evalunathomann@gmail.com

# Lighting plan

## WHY DON'T YOU SLEEP AT NIGHT



21 PC 1 KW



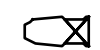
14 PAR CP 62



2 PAR CP 60



3 profile 26°



1 profile 25°-50°



16 WASH

Other:

1 smoke machine  
2 floor light holder

Backdrop: black with central entry

Side: black curtains for all the length of the two sides of the stage & two entrances for each side

Floor: linoleum